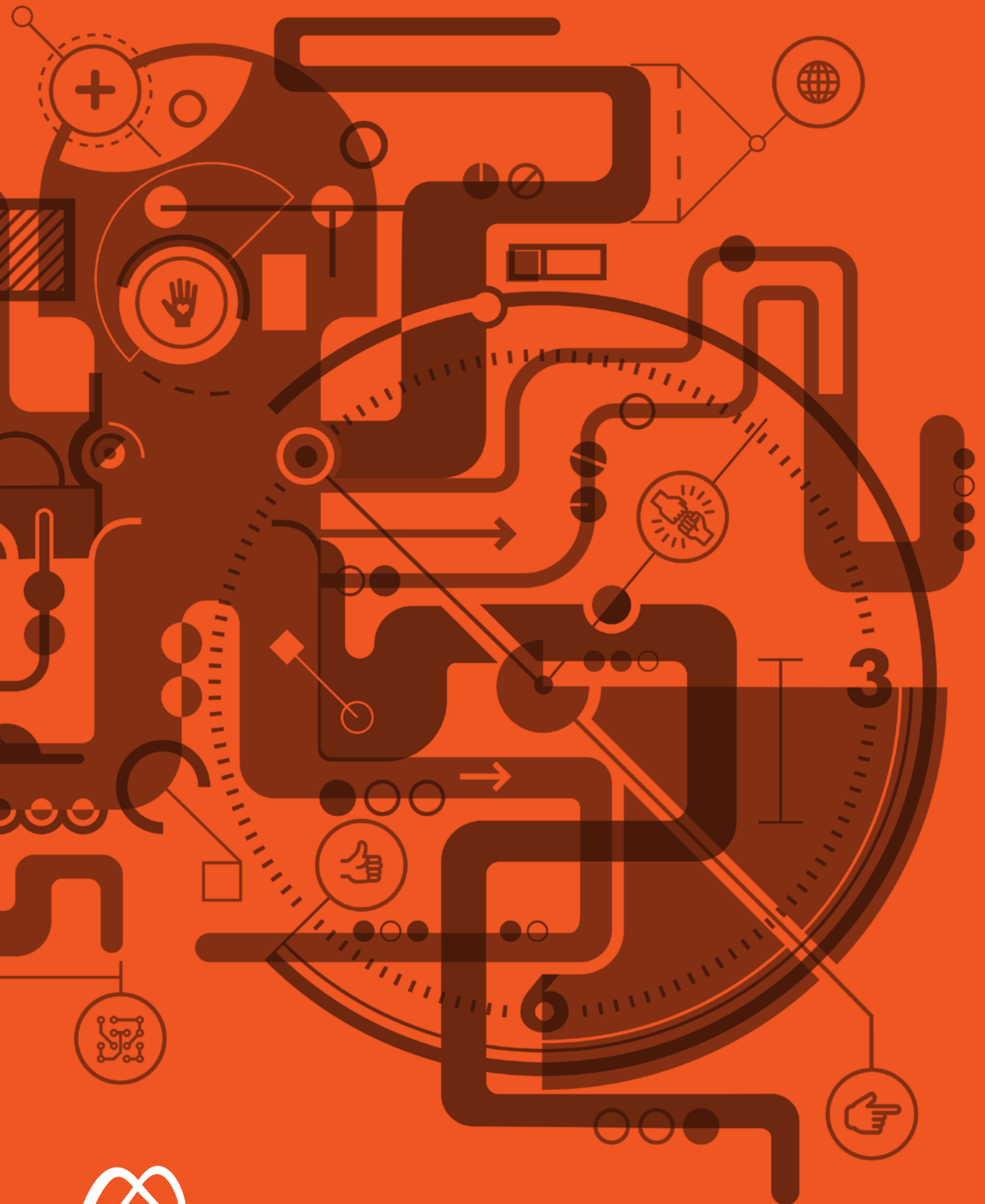


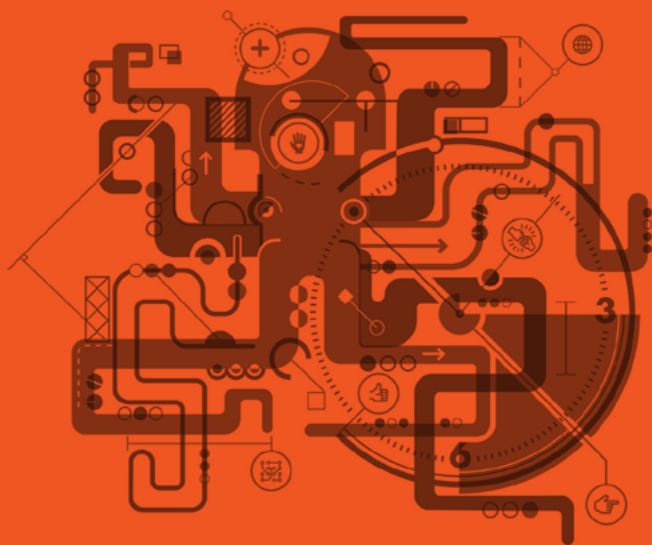
Right. On time



metric
consulting engineers

Our thing.

We are a team of problem solvers and creative thinkers, testing and challenging ideas. We provide rigorous engineering solutions that underpin the safe and efficient development of infrastructure. We deliver Right. On time.



Team capability.

Mechanical

Our Mechanical Engineering Team is the core problem-solving unit of our business. Our expertise spans greenfield design, finite element analysis (FEA)/ Computation Fluid Dynamics (CFD) and complex modelling, through to brownfield problem-solving, commissioning and 24/7 site support.

Civil and Structural

Our expertise includes mining and steelmaking infrastructure, particularly large heavy structures for materials handling. Keeping our eye on the latest technologies, we can design structures in Steel, Concrete, Aluminium, and FRP.

Drafting, Modeling and Documentation

MCE's Digital Engineering team provides 3D Modelling, Drafting, 3D Scanning and Prototyping support to our design team. We use industry-leading 3D Parametric modelling technologies, including Autodesk Inventor, Nastran, Ansys, Fusion360, SPACE GASS, Navisworks, Plant3D, AutoCAD, Solidworks, TEKLA, and MicroStation. We can provide automated 3D simulations for critical shutdown works or product testing. We can provide reviews in AR & VR, providing clients with a realistic 1:1 perspective of their project long before construction begins.

Our Engineering Documentation is of the highest standard - we can provide drawings at every level of the engineering design process, from concept development to final shop drawings.

Delivering value

Right vision.

Our principals.



Jim Watson

Founder, Managing Director, and Principal Designer

With 30 years of working across heavy industry and a background in mechanical design and project

management, Jim's broad experience and passion for innovation and technology are the backbone of MCE.



Brendan Smith

Engineering Manager/Associate and Lead Mechanical Engineer

Brendan's mechanical design experience, including FEA & CFD, practical site

implementation, plant reliability, and project delivery experience, ensures our client's projects are in good hands from concept to commissioning.



Andrew Schwenke

Principal Mechanical Engineer/Project Compliance Lead

Andrew's 35+ years of experience in heavy industry, managing large capital projects and plant

maintenance strategies and budgets, ensures he understands the importance of delivering projects on time and within budget. Andrew ensures our engineering design team are on the right path from kick-off and compliant with client, industry and regulatory requirements.

Safety in design is our first consideration on every new project. Safety, design efficacy and financial performance are the holy trinity of engineering design.

Jim Watson - Managing Director



Right stuff

We don't do everything; we just do our thing better. There are many components to the engineering design process, and at MCE, each is given equal focus – from concept sketches to final drawings. We work to deliver project solutions Right. On time. Delivery of the project is as important at the back end as solving the problem at the front.

Right. On time



Right people

Successful outcomes rely on the expertise and specialist skills of people; the right people. Whether we're engineering structures for materials handling, mechanical plant for complex processes, or digital solutions for CAD, we put a great deal of effort into ensuring our staff are highly skilled, competent, and professional and embody our Right. On time. core philosophy.

"It's better to be alone than in bad company."
Sir Issac Newton



Right team

People are unique in their ability to bring individual experiences, training and skill sets into a group where the collective outcome can be greater than the sum of its parts. That's how we view building the right team, founded on the value of the right people amplified by the strength and focus of group thinking.

Our retrospective view on project performance fuels continuous improvement, from client interaction to personal and professional development. We set our benchmark high... and live up to it.

"Teamwork is the secret that makes common people achieve uncommon results."
Ifeanyi Enoch Onuoha



Right values

We understand our capabilities and are committed to openness and transparency in all aspects of the engineering process. Safety is the top priority throughout the design process, and along with design efficacy and financial performance, it forms the holy trinity of our engineering design process.

Our rigorous pursuit of this outcome unites us with a singular vision of the right action, guided by an ethical mindset across all projects. This translates into transparency, openness, and honesty, ensuring our client relationships are built on a foundation of trust.

"Our value is the sum of our values."
Joe Batten



Right place

We believe in being accessible and on call, which means having a local team. We're right here with you. This applies not only to the principals of our business but also to the rest of our design teams, each remaining closely focused on delivering the right outcome for your project, especially when it counts the most.

"The best ability is availability."
Brian Dawkins



Right attitude

We're approachable and value the strong relationships we've built with our clients. We work collaboratively with client stakeholders, focusing on safety, design intent, project objectives and delivery - Right. On time.

"Your altitude is the direct result of your attitude, not your aptitude."
Unknown.



Right technology

The technology of engineering design is constantly evolving, and MCE is committed to staying ahead of the latest tools and implementing them where appropriate to assist our clients in achieving the best outcome.

MCE's capability in the Engineering Technology space is constantly growing. We can undertake 3D Scans using our new Leica Scanner, develop 3D Models using Autodesk Inventor, Fusion360 or SolidWorks, apply meta-detail and links within our 3D models to meet the requirements of your SAP or other maintenance planning systems, prototype complex mechanical designs with 3D-Printing or high-precision machining, and host Virtual Reality (VR) design reviews of your project – all the while still producing standard drawings, using AutoCAD or MicroStation, required for fabrication and site installation. We're committed to working to your standards, ensuring seamless integration with your existing systems.

"Any sufficiently advanced technology is indistinguishable from magic."
Arthur C. Clarke



Right for the planet

We're always conscious of the potential for environmental impact during the design process, adopting strategies for sustainability and minimal environmental impact in our designs wherever possible. This philosophy forms part of our standard Safety in Design (SiD) process.

"The best way to predict the future is to create it."
Peter Drucker



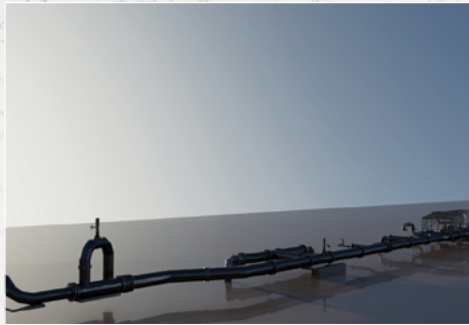
Right. Now

"Engineering" comes from two Latin words: Ingenium, meaning "cleverness", and Ingeniare, meaning "to contrive, devise". For over 10 years, MCE has been tapping into our creative ability to solve problems and devise solutions for our clients, and we're looking forward to assisting you with yours.

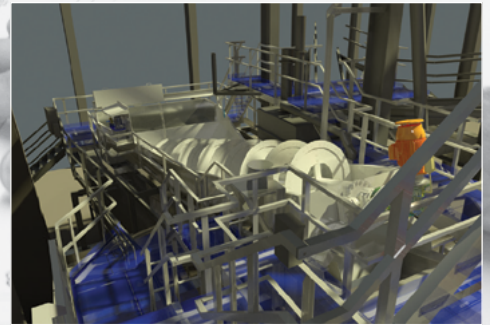
"Engineering: The art of organising and directing men, and of controlling the forces and materials of nature for the benefit of the human race."
Henry Gordon Scott



Liberty Steel Whyalla - Blast Furnace. MCE were engaged to design a new structure to allow replacement of the BF Gas Main Sliding Joint and Elbow.



Liberty Steel Whyalla - Power & Services. Mechanical, civil, structural engineering design of a 1200-Diameter HDPE Salt Water Bypass Main.



SIMEC Mining - Pellet Plant. Mechanical, civil and structural design for the replacement of the METSO screw classifier, including SoW development for Cold Shutdown installation.

What our clients say.

Liberty Steel:

"Metric is a young and dynamic company that has the structural engineering design capability to match the big boys. No job is too difficult. They are easy to deal with and flexible with client requirements."
Site Representative, SIMEC Mining, Whyalla.

Papyrus Australia:

"The (MCE) team has completed phase one of our project and has come in ahead of time and under budget with a simple and elegant solution. We have been impressed both with their flexibility to work with various maturities of inputs and the creativity applied to design solutions for key concerns we had in relation to the pilot facility."
Daniel Schmidt, CEO Papyrus Australia

08 7120 6220
contact@mce.com.au
mce.com.au

PO Box 601, Whyalla,
South Australia 5600

WHYALLA:

5 Forsyth Street, Whyalla,
South Australia 5600

